

SPECIFICATION

STAGE V



LOADALL | COMPACT RANGE

Gross power: 19kW - 55kW Lift capacity: 1600kg - 2500kg Lift height: 4m - 6m



ULTIMATE PERFORMANCE IN A COMPACT PACKAGE.

Every JCB telehandler is designed to offer superb productivity, and the compact loadall range is no different. Excellent visibility and manoeuvrability, versatile performance, potent power and innovation-driven efficiency are all part of the package.

ULTIMATE PRODUCTIVITY.

The compact Loadall range provides powerful performance and versatility with excellent manoeuvrability, whilst making the most of every drop of fuel.



ULTIMATE STRENGTH.

We've used innovative, state-of-the-art design and manufacturing processes to ensure that strength, durability and reliability are built in.

ULTIMATE COMFORT.

JCB compact Loadall cabs are great places to work, with high levels of comfort, easy-to-use controls and good visibility, keeping operators productive.



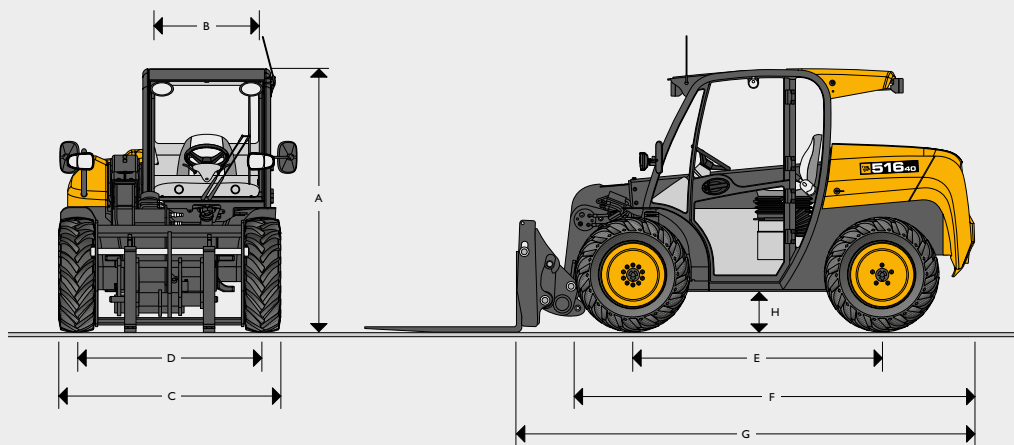
ULTIMATE EFFICIENCY.

The compact Loadall range offers extremely low operational costs in the short term, whilst holding their value in the long term.

ULTIMATE SAFETY.

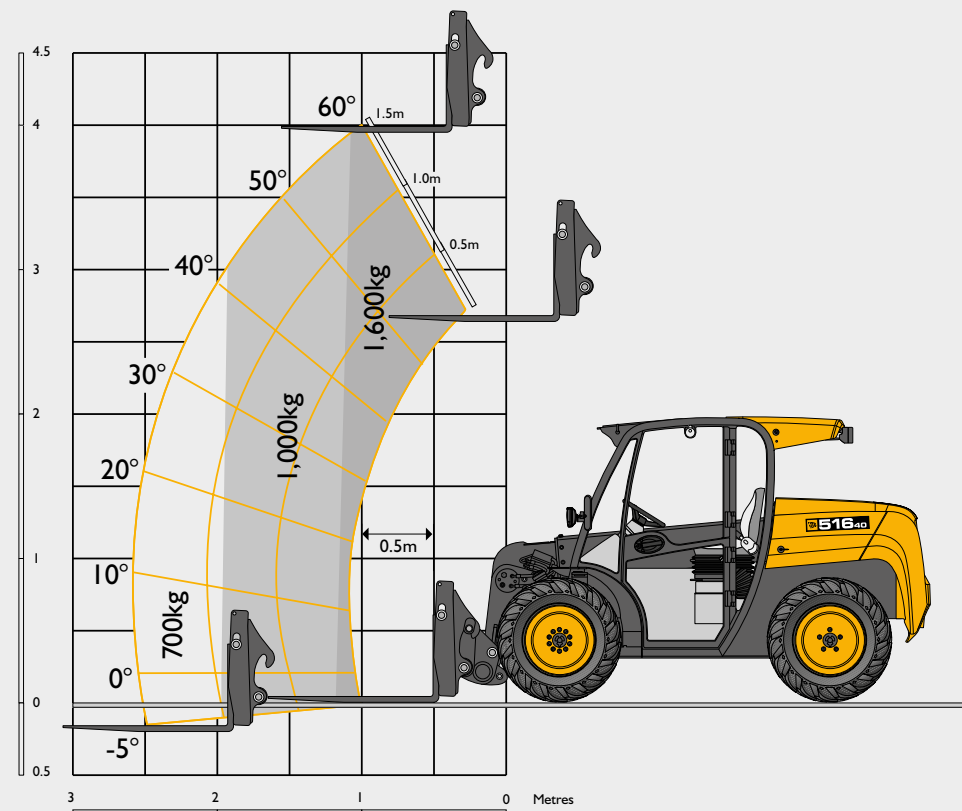
Safety is paramount on any site. That's why we've designed the new JCB compact range to protect machine, operator and bystanders alike.

STATIC DIMENSIONS



Machine model		516-40
A	Overall height	m 1.8
	Overall height with wiper	m 1.84
B	Inside width of cab	m 0.87
C	Width over tyres	m 1.56
D	Front track	m 1.3
E	Wheelbase	m 1.75
F	Overall Length to front tyres	m 2.8
G	Overall length to front carriage	m 3.23
H	Ground clearance	m 0.24
	Outer turn radius over tyres	m 2.8
	Weight	kg 3421
	Carriage roll back angle at ground	degrees 35/30*
	Carriage dump angle at max height	degrees 30/35*
Tyres	traction	255/75-15.3
	industrial	10.0/75-15.3
	semi-turf	10.0/75-15.3

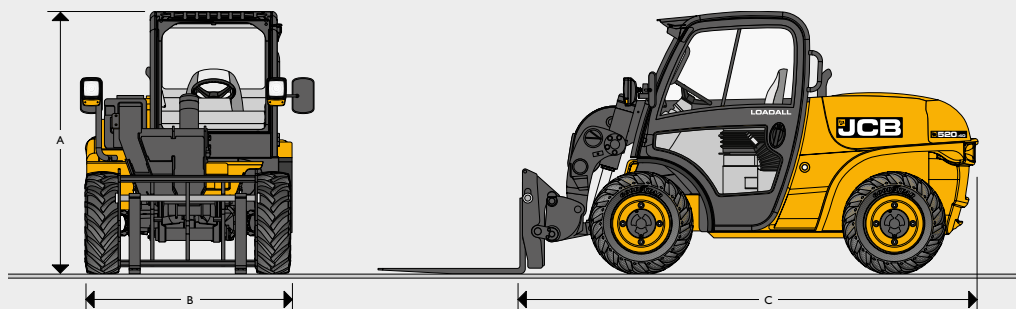
LIFT PERFORMANCE



Machine model		516-40
Lift capacity to full height	kg	1600
Lift capacity at full reach	kg	700
Payload at 2.0m boom extension	kg	1000
Max. lift height	mm	4045
Reach at max. lift height	mm	460
Maximum forward reach	mm	2535

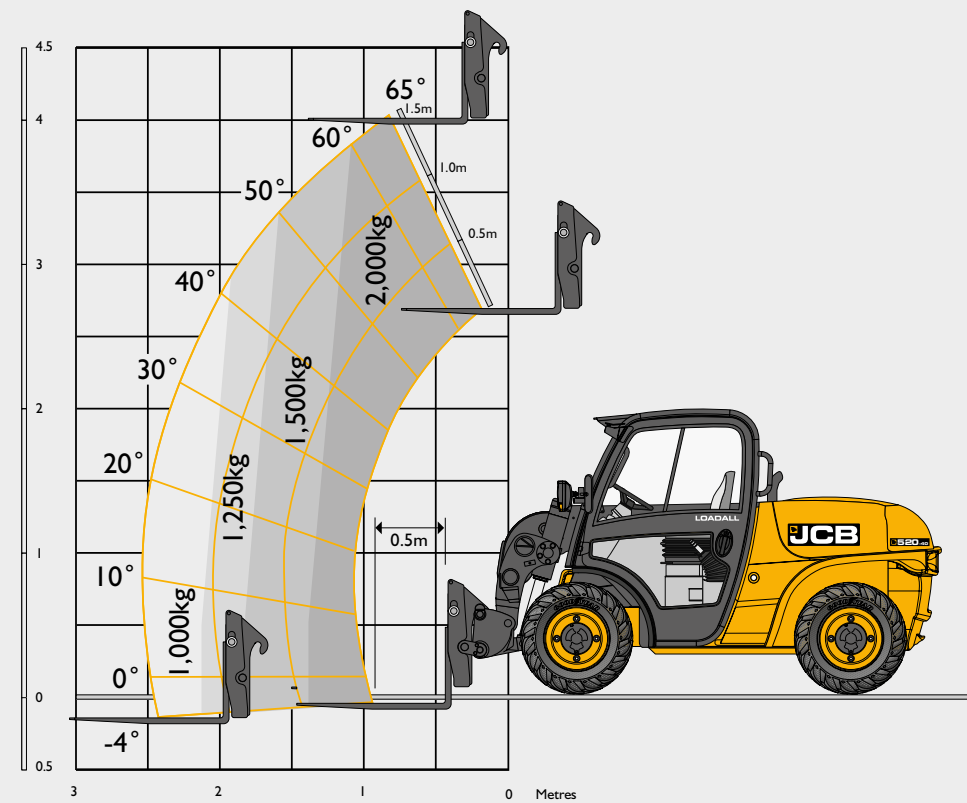
Complies with stability test EN 1459 Annex B.

STATIC DIMENSIONS



Machine model		520-40
A	Overall height	m 1.97
B	Inside width of cab	m 0.92
C	Width over tyres	m 1.56
D	Front track	m 1.29
E	Wheelbase	m 1.90
F	Overall Length to front tyres	m 2.92
G	Overall length to front carriage	m 3.38
H	Ground clearance	m 0.27
	Outer turn radius over tyres	m 3.05
	Weight	kg 4400
	Tyres	10x16.5 12 ply
		12x16.5 10 ply
		11.5/80x15.3 8 ply

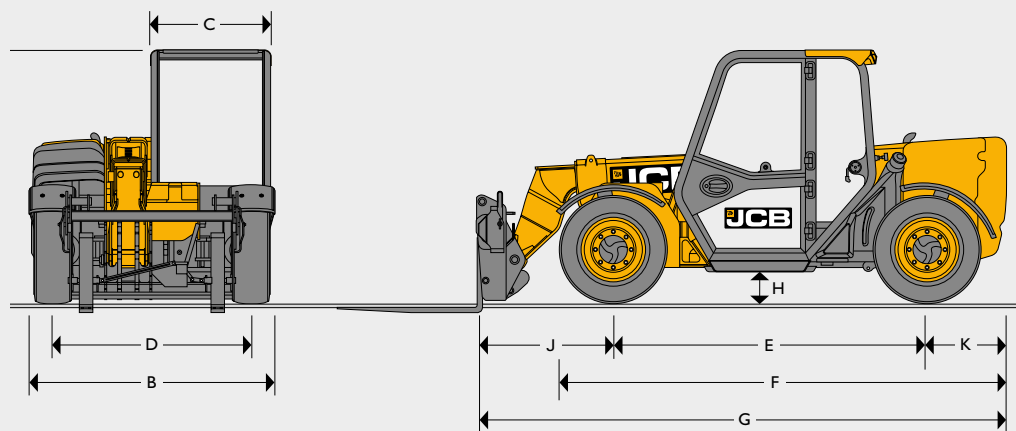
LIFT PERFORMANCE



Machine model		520-40
Lift capacity to full height	kg	2000
Lift capacity at full reach	kg	1000
Max. lift height	mm	4035
Reach at max. lift height	mm	890
Maximum forward reach	mm	2590

Complies with stability test EN 1459 Annex B.

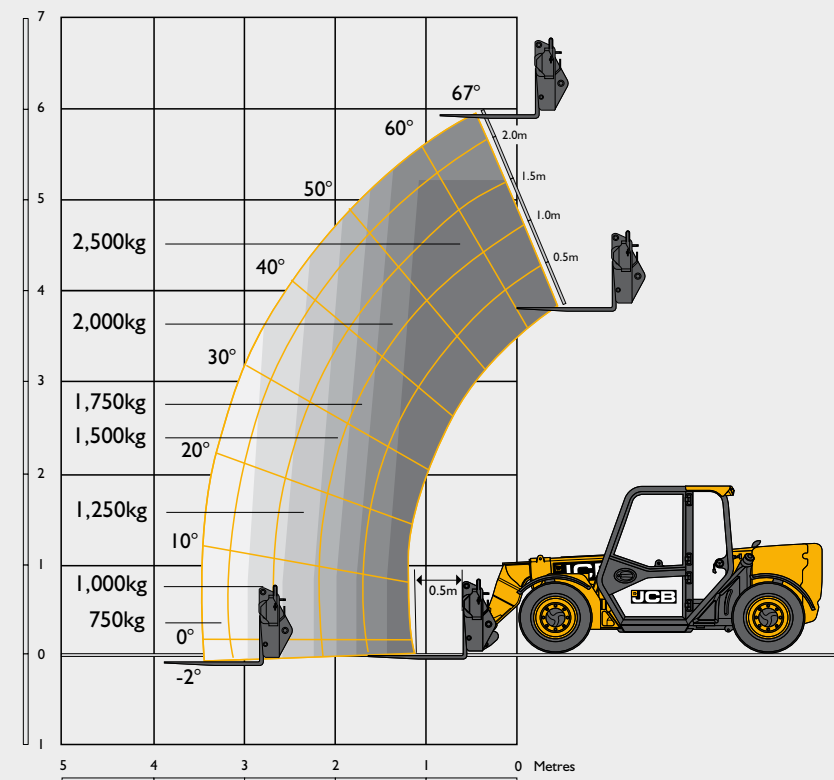
STATIC DIMENSIONS



Machine model		525-60 Hi-Viz
A	Overall height*	m 1.89
B	Overall width (over tyres)*	m 1.84
C	Inside width of cab	m 0.88
D	Front track	m 1.53
E	Wheelbase	m 2.39
F	Overall Length to front tyres	m 3.38
G	Overall length to front carriage	m 4
H	Ground clearance	m 0.23
J	Front wheel centre to carriage	m 1.02
K	Rear wheel centre to rear face	m 0.6
	Carriage roll back angle	degrees 11
	Carriage dump angle	degrees 114
	Weight	kg 5490
	Tyres	industrial 12x16.5

* Dependant upon tyre specified.

LIFT PERFORMANCE



Machine model		525-60 Hi-Viz
Maximum lift capacity	kg	2500
Lift capacity to full height	kg	2000
Lift capacity at full reach	kg	800
Lift height	m	6
Reach at max. lift height	m	-0.15
Maximum forward reach	m	3.06
Reach with 1.2 tonne load	m	2.64

Complies with stability test EN 1459 Annex B.

SPECIFICATION

LOADALL COMPACT RANGE

ENGINE				
		516-40	520-40	525-60 Hi-Viz
Engine model		Perkins 403J-17	Perkins 403J-17	JCB DIESEL BY KOHLER
Power	kW	19	19	55
Torque	Nm	98Nm @ 1400rpm	98Nm @ 1400rpm	300Nm @ 1500rpm
Displacement	litres	1.7	1.7	2.5
Number of cylinders		3	3	4

TRANSMISSION				
		516-40	520-40	525-60 Hi-Viz
Type		Hydrostatic	Hydrostatic	Hydrostatic
Modes		2 Speed	2 Speed	2 Speed
Maximum speed	kph	15	15	20
Drive		Permanent 4 Wheel Drive	Permanent 4 Wheel Drive	Permanent 4 Wheel Drive

ELECTRICAL SYSTEM				
		516-40	520-40	525-60 Hi-Viz
System voltage	Volt	12	12	12
Alternator output	Amp hour	85	85	100
Battery capacity	Amp hour	80	80	120

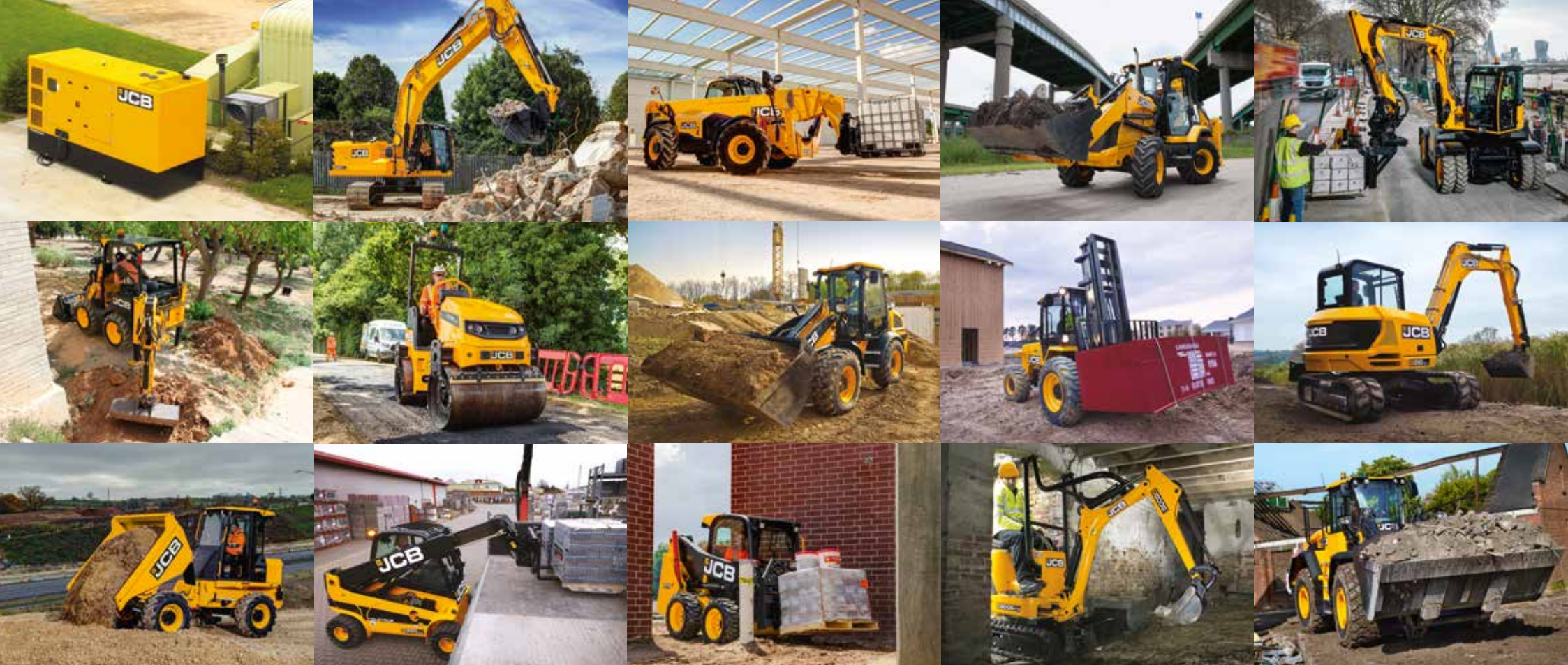
HYDRAULICS				
		516-40	520-40	525-60 Hi-Viz
Maximum system pressure	bar	230	230	260
Flow rate	ltr/min	40	40	80
Joystick control		Single lever	Single lever	Single lever Servo
Steer modes		Permanent 4 Wheel Steer	Permanent 4 Wheel Steer	3 modes
Cycle times				
Boom Raise	seconds	8.9	8.9	7.6
Boom Lower	seconds	4.9	5.9	5.3
Extend	seconds	6.6	4.7	7.5
Retract	seconds	3.7	4.7	3.7
Bucket Dump	seconds	4.2	4.8	1.9
Bucket Crowd	seconds	3	4	2.9

SERVICE CAPACITIES				
		516-40	520-40	525-60 Hi-Viz
Fuel tank	litres	50	61	65
Hydraulic tank	litres	58	33	75

BRAKES				
		516-40	520-40	525-60 Hi-Viz
Service brakes		Hydraulically operated self-adjusting		
Parking brake		Manually operated drum brake	Manually operated drum brake	SAHR Handbrake self adjusting

CAB				
Quiet, safe and comfortable cab conforms to ROPS ISO3471 and FOPS ISO 3449. Hourmeter, adjustable seat, digital dash with machine warings and levels, LiveLink telematics, patented longitudinal load moment control, joystick including transmission direction control.				

OPTIONS AND ACCESSORIES				
Options: Cab work lights (halogen / LED), boom work lights (halogen / LED), air conditioning, rotating beacon, fire extinguisher, window guards. Industrial, solid, turf, pneumatic and non marking tyres, hydraulic carriage locking, radio kit, full carriage / headstock range available.				
Attachments: Full attachment range - forks, buckets, grabs etc.				



ONE COMPANY, OVER 300 MACHINES.

Your nearest JCB dealer

Loadall Compact Range

Gross power: 19kW - 55kW Lift capacity: 1600kg - 2500kg Lift height: 4m - 6m

JCB Sales Limited, Rocester, Staffordshire, United Kingdom ST14 5JP.

Tel: +44 (0)1889 590312 Email: salesinfo@jcb.com

Download the very latest information on this product range at: www.jcb.com

©2021 JCB Sales. All rights reserved. No part of this publication may be reproduced, stored in a retrieval system, or transmitted in any form or by any other means, electronic, mechanical, photocopying or otherwise, without prior permission from JCB Sales. All references in this publication to operating weights, sizes, capacities and other performance measurements are provided for guidance only and may vary dependant upon the exact specification of machine. They should not therefore be relied upon in relation to suitability for a particular application. Guidance and advice should always be sought from your JCB Dealer. JCB reserves the right to change specifications without notice. Illustrations and specifications shown may include optional equipment and accessories. All images are correct at time of print. The JCB logo is a registered trademark of J.C. Bamford Excavators Ltd.

