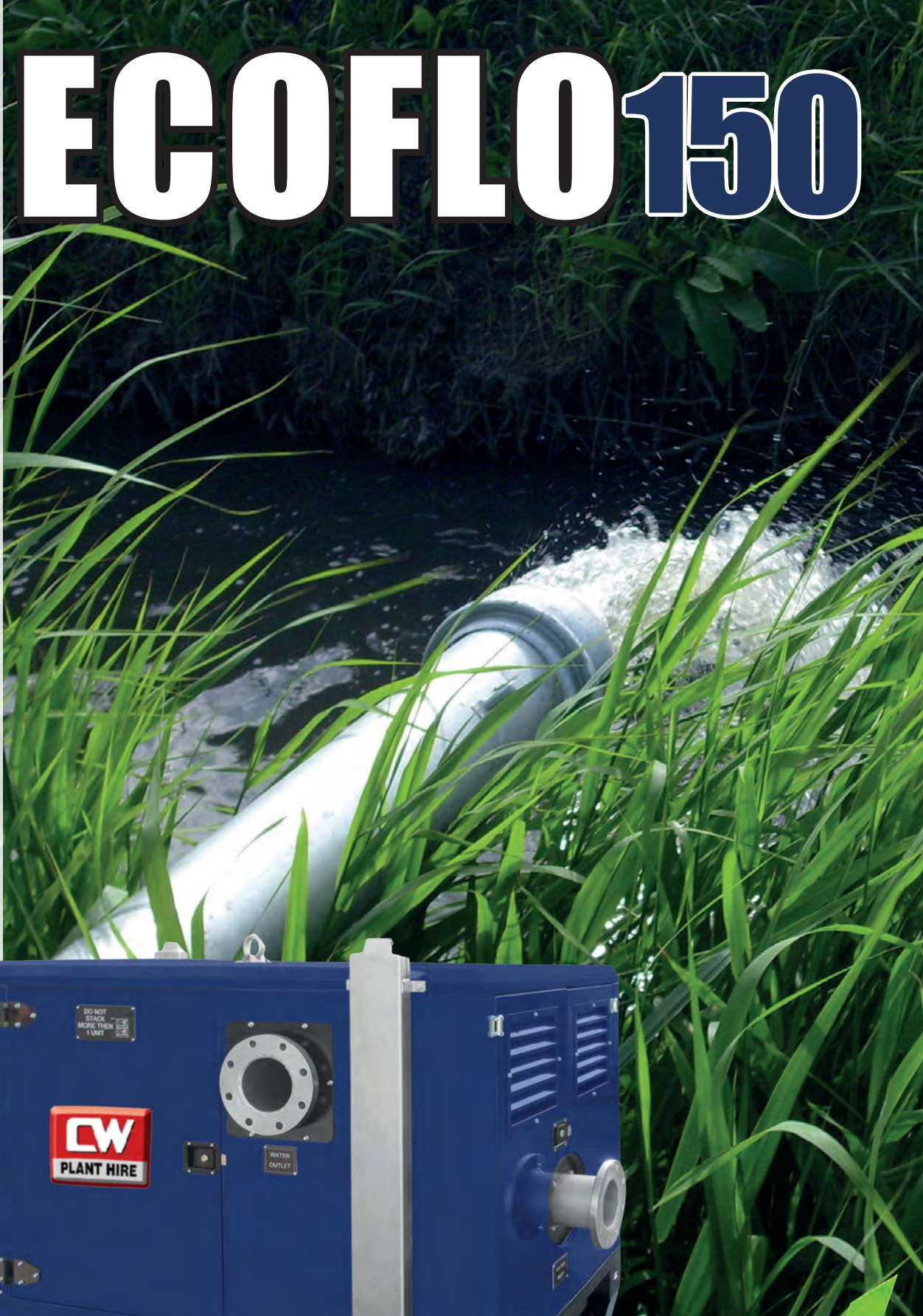




ECOFLO 150



STAGE 5
READY

**6" Super Silent
Dry Vacuum Assisted
Diesel Engine Pump**



ECOFLO 150

The ECOFLO pump series are one-stage, self-priming centrifugal pumps with vortex impellers, capable of handling clear or dirty liquids with large solids. These pumps are suitable for use in the following applications: waste treatment, environmental protection, shipbuilding, civil engineering, construction and agriculture.

The pump primes and re-primers automatically to depths over 8,5 meters (28,5 feet), even when loaded with significant air intake. They also offer 2,000 hours maintenance free due to the high quality diaphragm and valves.

Dry running is possible as all pumps are equipped with mechanical seals with hard faces that are continuously lubricated by the oil bath system. This lubrication prevents damage during dry running, allowing the pump to run completely dry for indefinite periods while automatically priming and re-priming.

Performance Features

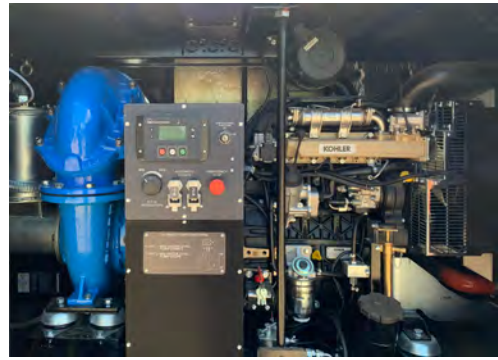
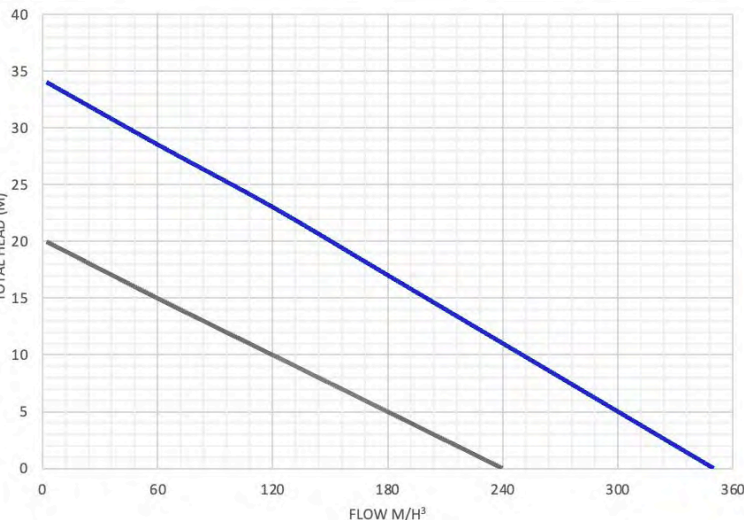
Max Capacity	5850 Lt/min
Max Flow	350 mc/h
Min/max rpm	1000/2200
Max head	35 mt
Solids handling	100 mm
Fuel tank Running time @ 1400rpm	80hrs

Pump Body features

Pump casing & suction cover	Cast Iron G25
Wearplate	Cast Iron G25
Impeller	Spherical Cast Iron GS500
Mechanical Seal Face	Silicon Carbide & Tungsten
Vacuum pump	Aluminium
Shaft	Stainless Steel 39NiCrMo3
Impeller diameter (mm)	245mm
Vortex Impeller blades	6no
Suction size	6" – 150mm
Discharge size	6" – 150mm

Weight and overall dimensions

Dry Weight (kg)	1645
Height (mt)	1610
Width (mt)	1146
Length (m)	2555



General features

Fuel tank capacity	512 litres
Total running time @ 1400rpm	176 hrs
Total running time @ 2000rpm	80 hrs
Acoustic information - [dBA]	90 Lwa 65 dB At 7 mt
PH flow	6,5 - 8,5
Type Vacuum pump (MC/H)	50
Liquid temperature - Max (C°)	70
Density (Kg\Lt)	1,100

Engine features

Manufacturer	Kohler
Model	1903 TCR/26B
Emissions management system	STAGE 5
Injection equipment	Turbo high pressure common rail
Displacement engine	1861cmc
Power (KW)	42 kW
N. cylinders	3
Rated speed (RPM)	1000/2200
Fuel consumption @ 1400rpm (lt/h)	2.90 l/h
Fuel consumption @ 2000rpm (lt/h)	6.40 l/h

Frontal panel features

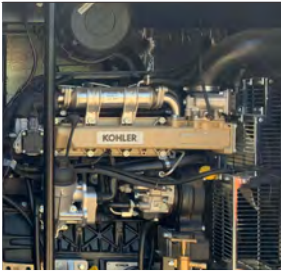
- Control panel supplying key
- Vacuum meter
- Manual regulation of engine speed
- Emergency Stop button

DSE E400 controller specifically designed for the ECOFLO range. It allows for remote management of: engine speed – two floats for managing the automatic start/stop - control of hydraulic circuit pressure - remote start/stop of the pump – engine alarms - historical failure list.

Options

- Geofencing – Tracking

Features and Benefits



Kohler Stage V Diesel Engine
Meets the current equipment emission regulations and is HVO fuel compatible.



Emersed Seal technology
Prolongs mechanical seal life as all major seal components are oil emersed.



Shaft Drive Vacuum Pump
Eliminates issues associated with belt drive versions.



Three Way Fuel Valve
For external fuel tank Connection



Level Control System -
Plug ins for float controls



Engine Drain Pump
To avoid oil spills during servicing



Four Low Level Securing Points
To avoid the need to strap over the canopy causing damage



Impeller Options
Twin Blade Screw or Six Vane Vortex



External Vacuum Gauge
To observe vacuum pump priming performance



Built in Internal Lifting Frame
To suspend pump end components during maintenance.



Stacking Legs
To allow pumps to be stacked in twos



Multi Door Access
For ease of maintenance

Optional Extras

Remote Machine Management: basic or full telematic remote monitoring and electronic control system.

Built in Solar panel trickle charger: maintains battery performance

Fuel Active: ensures fuel is taken from the top of the tank rather than the base

Marine 12v Power Sockets c/w Internal & External Working Light Way Fuel Valve